

Placement Into College English and Math Courses

Placement Testing Requirements: All students will be required to take placement tests.

Applicants should complete an application for admission to the college **before** taking the placement test. Admissions Counselors will refer students with completed applications to the Testing Center for placement testing. Once scores have been obtained, students will take the scores to their advisor for registration into the appropriate English and Math courses.

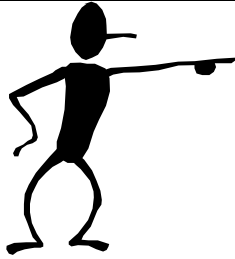
PCC offers two placement tests for students: COMPASS and ASSET.

1. The Computerized Adaptive Placement Assessment and Support Services (COMPASS) test, developed by American College Testing (ACT), is PCC's main assessment tool. The placement test consists of three parts: reading, writing, and mathematics. These tests are used to determine the beginning math and English courses in which students will be the most successful. Because PCC endorses a "whole language" approach to teaching English, the COMPASS multi-measure feature is utilized to combine the reading and writing scores to determine an English placement.
2. The ASSET test, developed by ACT, is used to test large groups and to accommodate students with special needs when appropriate. There are four components of ASSET: Writing Skills, Reading Skills, Numerical Skills, and Elementary Algebra. The multi-measure feature is also utilized to combine reading and writing scores to determine English placement.

Resources: The following resources can assist students in preparing for placement tests:

- Test review sheet obtained from the testing office or on our website
- Visiting the ACE lab in the Leslie Building room 111. For more information call 252-493-7396.
- Math review available at www.purplemath.com
- Students may purchase a book called *Chart Your Success on COMPASS* in the Pitt Community College bookstore located in the Vernon White Building room 40, or by calling Contemporary Publishing Company in Raleigh at 919-851-8221. The cost of the book is \$49.95.
- COMPASS sample test questions available at <http://www.act.org/compass/sampole/index.html>
- ASSET sample test questions available at <http://www.act.org/asset/tests/index.html>
- ACCUPLACER sample test questions available at <http://cpts.accuplacedr.com/docs/StudentGuide.html>

PLACEMENT TESTING SCHEDULE



Local students must take the placement tests at PCC. The test is offered during the following times:

The computerized COMPASS test is given during the following walk-in lab hours:

- *Mondays from 8:00am-8:00pm (must begin the test by 6:00pm)*
- *Tuesdays and Thursdays from 8:00am-5:00pm (must begin the test by 3:00pm)*
- *Wednesdays and Fridays by appointment only*

***Students do not need an appointment on Mondays, Tuesdays, and Thursdays. They may come in during these open lab hours to take the placement test.*

***If students prefer to take a paper and pencil version of the placement test, they must schedule an appointment by calling 252-493-7561. The ASSET is a paper and pencil test.*

FOR DISTANCE LEARNERS:

Students who are not local, may take the COMPASS, ASSET, or ACCUPLACER at another college and have the scores sent to PCC. If students do not live near a college that offers one of these tests, the PCC testing office can send proctoring instructions for the online ACCUPLACER test to an approved test proctor. The proctor approval request form can be found on our website at

www.pittcc.edu/students/admissions/Proctor_Request_Form.pdf.

Please contact the Placement Testing Office at 252-493-7561 or Happy Gingras at hgingras@email.pittcc.edu if you have questions about the placement test. The Placement Testing office is located in the Warren Building, Room 2402.

PLACEMENT TESTING WAIVERS

All students are required to take a placement test in Reading, Writing, and Math before registering for most classes at PCC. Students may be waived from taking the placement test if they have taken and scored the following:

--New Students: 500 SAT or 20/20 ACT English/Reading = English

--New Students: 500 SAT or 23 = Math 161

--Transfer Students: English and math courses taken at another college with official transcripts submitted to the registrar (or unofficial transcript for a power user to override)

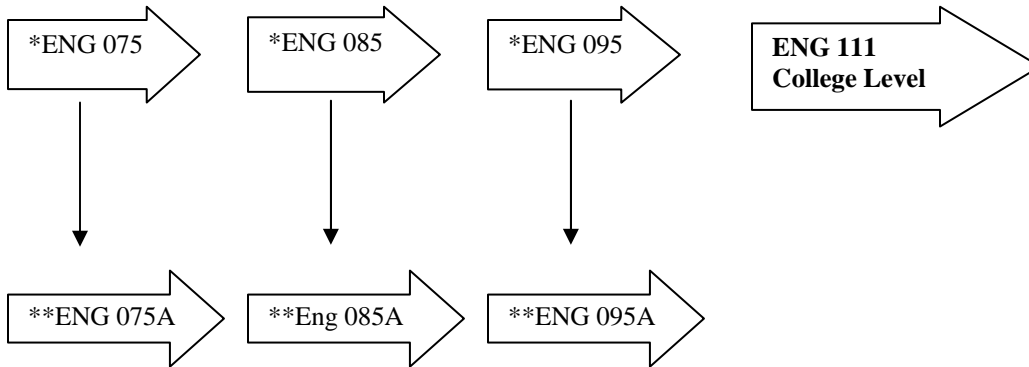
--Transfer Students: Scores from placement tests taken at another college with official transcripts submitted to the registrar (or unofficial transcript for a power user to override)

Please call the testing office, email the testing office, or visit our website at www.pittcc.edu/students/admissions/index.html for more information.

Developmental Courses Determined by Placement Tests

Students may take the placement test two times in any 3 year period. There is a minimum wait of ten days between the first and second administration of the test.

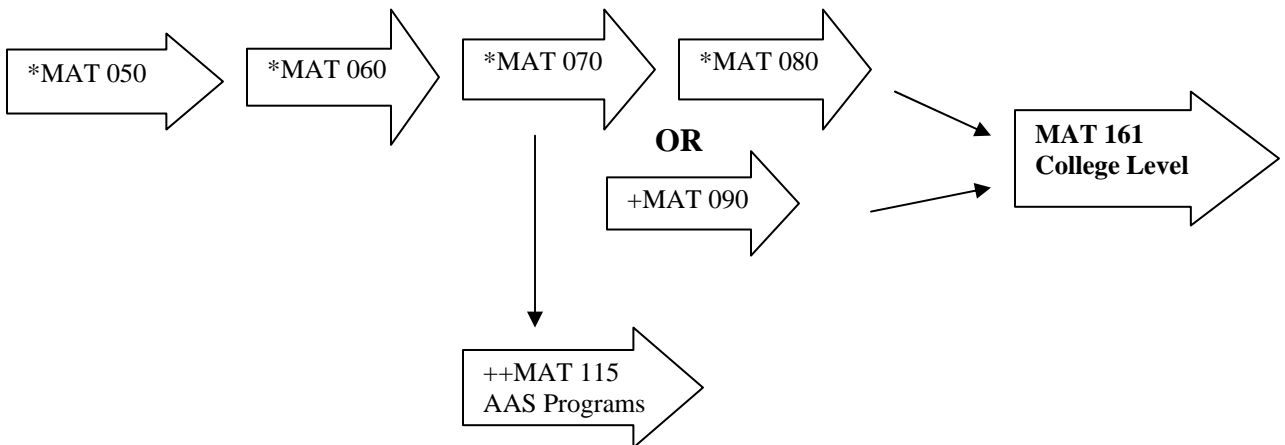
Path of Developmental English Courses:



*Classes that are numbered less than 100 are considered developmental and will not count towards graduation or as credits toward the AA or AS degree.

**Placement scores will determine if an English lab is needed; the need for subsequent lab classes will be based on the grade earned in the developmental English course.

Path of Developmental Math Courses:



*Classes that are numbered less than 100 are considered developmental and will not count towards graduation or as credits toward the AA or AS degree.

+ MAT 90 combines MAT 070 and 080 into one semester at an accelerated rate.

Placement scores will determine if a student is eligible for MAT 90 in place of MAT 70 & 80.

++This class does not transfer to four year institutions.